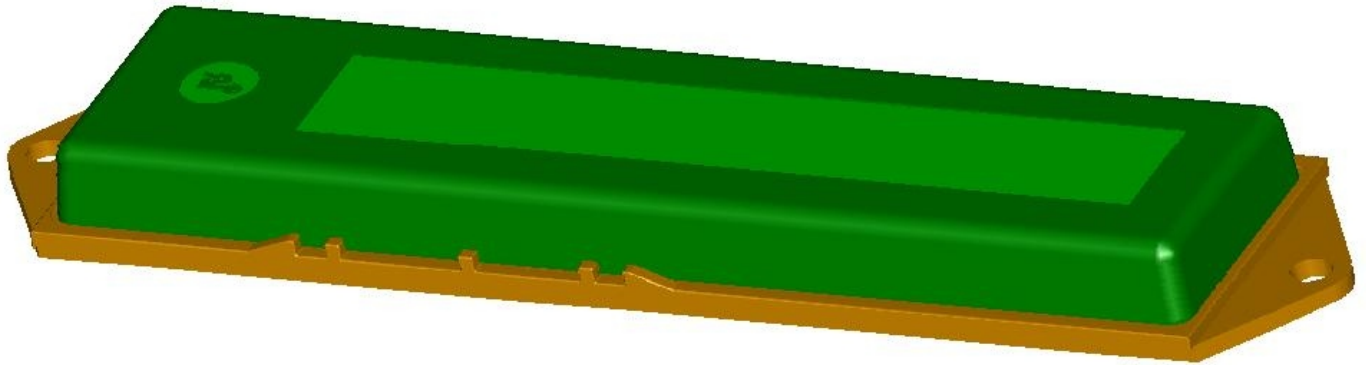


In2Connect Durable UHF RFID Tag



RFID technology offers many benefits in terms of track and trace through the retail supply chain, but standard tags do not function correctly when placed next to metallic or liquid products. The **I2C durable tag** solves this problem by encapsulating and protecting the inlay from harsh environments, and allowing the tag to work correctly when mounted direct to metallic objects.



The **I2C durable tag** incorporates an Avery Dennison 96 bit EPC UHF Generation 2 inlay, to provide a long read range and reliable performance in many situations such as on containers, stillages, trolleys, and other areas which would prove difficult for standard RFID tags.

For further information, please contact:

In2Connect Europe Ltd, Acton Street, Long Eaton, Nottingham NG10 1FT

Phone: +44(0) 115 901 1352

Fax: +44(0)115 901 1117

email: smcgivern@in2connect.net

Web: www.in2connect.net

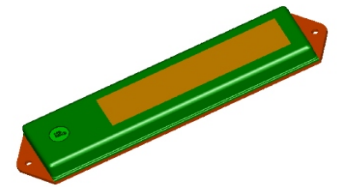
Incorporating



**AVERY
DENNISON**

RFID Technology

In2Connect Durable UHF RFID Tags



Product Description

The **I2C DurableTag** is a RFID UHF Gen2 product, suitable for rough- service applications, moulded in a tough PP housing for resistance to liquids and chemicals, which incorporates Avery Dennison RFID technology

Applications

Suitable for use on metallic objects such as stillages, trolleys etc, where the tag is subject to exposure to wet, hot and cold environments, as well as for permanent mounting to other media.

The tag incorporates mounting brackets, and features to allow custom fitment of application-specific adaptors.

Specifications

> Operating frequency:	865-869 Mhz and 902-928 Mhz. (96 bit id)
> Complies with ISO:	18000-6C
> Inlet type:	Avery Dennison 96 bit EPC UHF Gen2 inlay
> Read Range:	Typically 3 metres, at 0.5 watts E.R.P.
> Dimensions:	180mm x 43mm x 15mm.
> Case Material:	PP
> Protection class:	IP - 67
> Weight:	40 GMS (Typ)
> Data retention	Typically 10 Years

For further information, please contact:

In2Connect Europe Ltd, Acton Street, Long Eaton, Nottingham NG10 1FT

Phone: +44(0) 115 901 1352

Fax: +44(0)115 901 1117

email: smcgivern@in2connect.net

Web: www.in2connect.net

Incorporating



RFID Technology