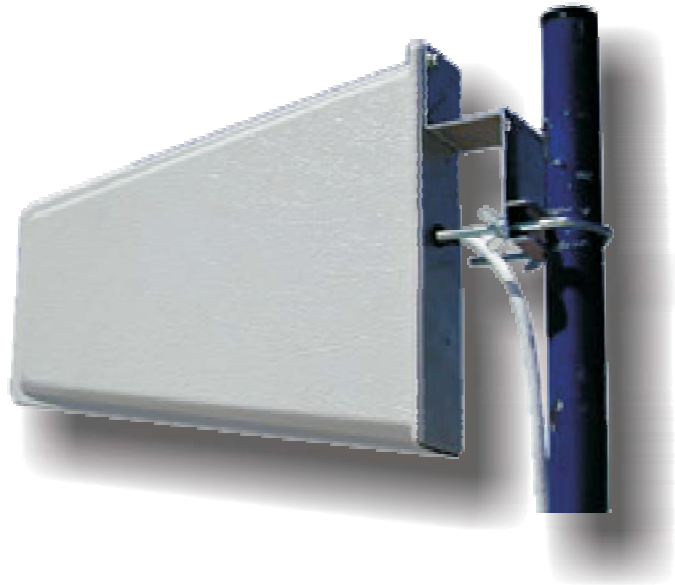


Broadband Directional Antenna

800 - 2500 MHz

Product code: LPDA-A0020



This medium gain wideband directional antenna covers the GSM 900, GSM1800 / UMTS and WLAN2400 bands. Its configuration is suitable for various cellular telephone systems as well as the 2.4 GHz ISM band.

Features:

- Broadband
- Covers various international cellular bands
- Compact and suitable for indoor and outdoor applications

Application areas:

This antenna provides telephone communications for the following:

<u>Standard</u>		<u>Frequency (MHz)</u>
TACS	Europe and Asia only	871 - 949
TDMA/CDMA/AMPS		824 - 894
SM "GSM 900"		870- 960
PDC Japan only		810 - 956
EGSM		806 - 869
GSM 1800 / PCS./ PCN		1710 - 1880
DECT		1880 - 1900

Specifications:

Product Code: LPDA-A0020

Electrical:

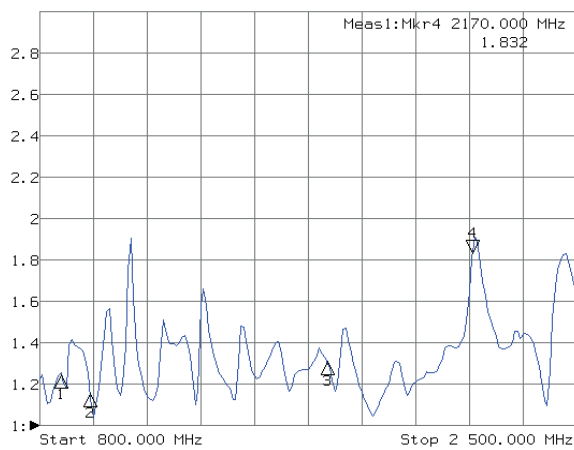
Gain (max.)	7.5dBi (± 0.5dB)
Gain (min. over band)	7.0dBi (± 0.5dB)
Frequency	800 - 2500 MHz
VSWR (typical)	<2.0:1
Front to back ratio (F/B Ratio)	>20 dB (± 0.5dB)
Feed power handling	10 W
Nominal input impedance	50 Ohm
H-plane 3dB beamwidth at 800 MHz	64° (± 2°)
H-plane 3dB beamwidth at 1900 MHz	72° (± 2°)
Connector	SMA(f)
Polarisation	Linear (Vertical or Horizontal)

Mechanical:

Feed mounting	Pole or wall mount
Dimensions (l x w x h)	317 mm x 240 mm x 57 mm
Weight	630g (including bracket)

VSWR and Gain Measurements:

VSWR



Gain

