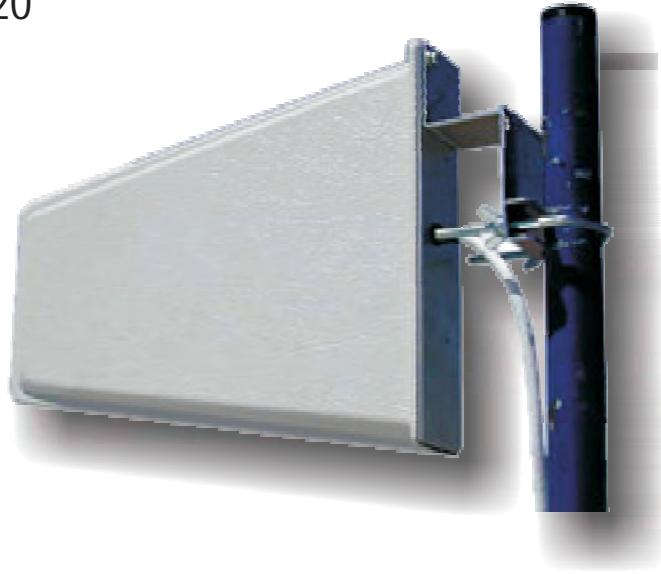


# Broadband Directional Antenna

800 - 2500 MHz

Product code: LPDA-A0020



This medium gain wideband directional antenna covers the GSM 900, GSM1800 / UMTS and WLAN2400 bands. Its configuration is suitable for various cellular telephone systems as well as the 2.4 GHz ISM band.

## Features:

- Broadband.
- Covers various international cellular bands.
- Compact and suitable for indoor and outdoor applications.

## Application areas:

This antenna provides telephone communications for the following:

Standard		Frequency (MHz)
TACS	Europe and Asia only	871 - 949
TDMA/CDMA/AMPS		824 - 894
SM "GSM 900"		870- 960
PDC Japan only		810 - 956
EGSM		806 - 869
GSM 1800 / PCS./ PCN		1710 - 1880
DECT		1880 - 1900
PHS	Japan, Taiwan and China only	1895 - 1918
GSM "GSM1900"	USA and Canada only	1850 - 1990
UMTS		1900 - 2170
WLAN		2400 - 2500

## Specifications:

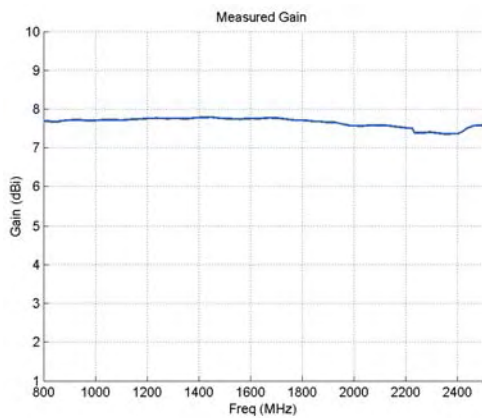
---

Product Code:	LPDA - A0020
Electrical:	
Gain	7 dBi (Typical)
Frequency Band	800 - 2500 MHz
VSWR (typical)	1.7:1 over 95% of the band
Front to Back Ratio (F/B Ratio)	>20 dB (nom)
Feed power handling	10 W
Nominal input impedance	50 ohms
Beamwidth	64° at 800 Mhz and 72° at 1900MHz in Horizontal Plane
Connector	SMA - Type Female
Polarisation	Linear (Vertical or Horizontal)
Mechanical:	
Feed mounting	Pole or wall mount
Dimensions (l x w x h)	317mm x 240mm x 57mm
Weight	Approximately 630g (including bracket)

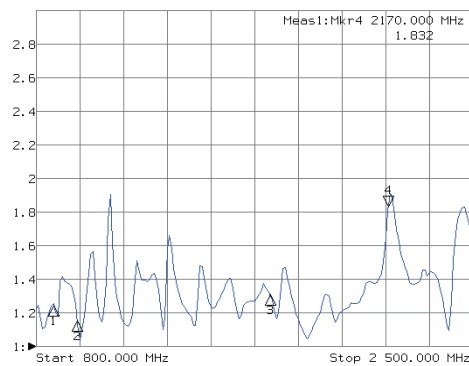
## Typical VSWR and Gain Measurements:

---

Gain



VSWR



Specifications subject to change without notice