

Wireless LAN - BridgePoynt

Range of enclosures to fit WLAN electronics

Poynting's BridgePoynt range of enclosures provide everything you need for professional outdoor wireless networking. The range includes weatherproof outdoor enclosures with or without integrated antennas, cable assemblies, power injectors and ancillary products. The electronics can be supplied separately.

These products can be combined into highly professional custom solutions that cater directly to a clients needs. All enclosures below are weatherproof and for outdoor use.



Enclosure without antenna

Size: (w x h x distance from pole)

Cable:

Product Code:

200 x 200 x 225 mm

8m CAT5 included

WLAN-A0001



Enclosure with 13 dBi Patch

Size: (w x h x distance from pole)

Cable:

Product Code:

Antenna

Frequency

Gain (max.)

E-plane 3 dB beamwidth

Polarisation

Link distance (pair)

200 x 200 x 225 mm

8m CAT5 included

WLAN-A0002

2.4 - 2.5 GHz

13 dBi (± 1 dB)

43° ($\pm 2^\circ$)

Linear

3 km (using 100mW output power)



Enclosure with 18 dBi Flat Panel

Size: (w x h x distance from pole)

Cable:

Product Code:

Antenna

Frequency

Gain (max.)

E-plane 3 dB beamwidth

Polarisation

Link distance (pair)

420 x 355 x 225 mm

8m CAT5 included

WLAN-A0003

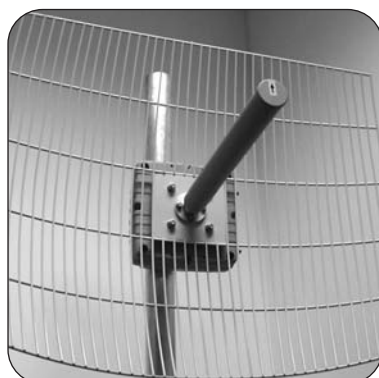
2.4 - 2.5 GHz

18 dBi (± 1 dB)

20° ($\pm 2^\circ$)

Linear

10 km (using 100mW output power)



Enclosure with 22 dBi Grid

Size: (w x h x distance from pole)

Cable:

Product Code:

Antenna

Frequency

Gain (max.)

E-plane 3 dB beamwidth

Polarisation

Link distance (pair)

750 x 650 x 600 mm

8m CAT5 included

WLAN-A0004

5 - 6 GHz

22 dBi (± 1 dB)

11° ($\pm 1^\circ$)

Linear

20 km (using 100mW output power)